



<div>Vendor</div> <div></div>	<div>ABT 360 KT/Y PP PLANT Project</div>		<div>Owner</div> <div><div>سراج گستران رجمال SERAJ GOSTARAN REJAL (سهامی خاص)</div></div>
	<div>Piping & Instrument Diagram (P&ID)</div>		
	<div>Vendor's Doc. No.: 23249-03</div>	<div>Rev.: 01</div>	
	<div>PPEC Doc. No.: L03-RE037-PR-PID-001</div>		

PPEC REQ. NO. : L03-RE037-PR-PID-001

ITEM NO. :

TOTAL PAGES : 03

- **NO COMMENTS** : Documents/Drawings Were Checked By PPEC And Further Step Can Be Followed.
- **COMMENTED AS MARKED:** Documents/Drawings Were Checked By PPEC And Marked Comments Must Be Considered By Vendor. Vendor Shall Revise Documents/Drawing As Per Comments And The New Revision Of Documents/Drawings Must Be Revised Prior To Fabrication.
- **REJECTED:** Documents/Drawings Were Checked And It Is Not In Comply With Purchase Requisition Requirements.
- **ACCEPTABLE WITH COMMENTS:** Documents/Drawings Were Checked By PPEC And Comments Must Be Considered By Vendor. Fabrication Can Proceed Accordingly. Revised Document To Be Issued Either For Review Or As Final Certified. However PPEC Will Check The Revised Document For Proper Incorporation Of Comments.
- **NOT RETURNED:** Document Was Received For Information And Not Returned To The Vendor.



Name :
Signature:
Date :

Req. No. :

Seq. No.:

PPEC review & comments does not absolve the vendor of the responsibility for the corrected design, manufacturing and operation of the equipment

01	27-05-2025	Issue for Engineering	S.K.	S.K.	J.J.	
00	28-03-2025	Issue for Engineering	S.K.	S.K.	J.J.	
REV.	DATE	Description	Prepared by	Checked by	Approved by	Authorized by

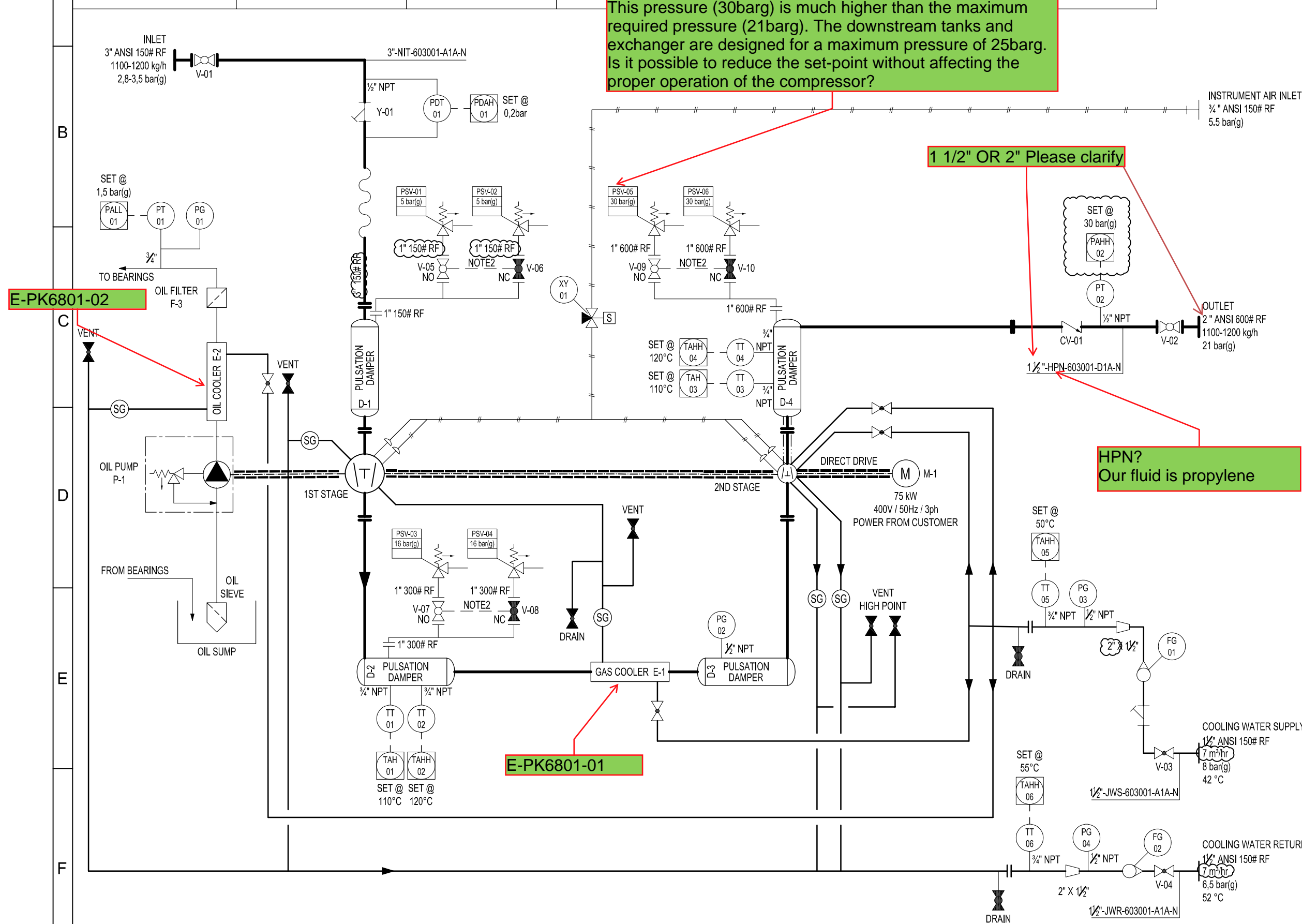
<div>Vendor</div> <div></div>	<div>ABT 360 KT/Y PP PLANT</div>		<div>Contractor (DEC)</div>	<div>Owner</div> <div><div>سراج گستران رجال SERAJ GOSTARAN REJAL (سهامی خاص)</div></div>
	<div>Piping & Instrument Diagram (P&ID)</div>			
	<div>Vendor's Doc. No.: 2 3 2 4 9 - 0 3</div> <div>PPEC Doc. No.: L03-RE037-PR-PID-001</div>	<div>Rev.: 01</div>		

PAGE NO.		CHANGE INDEX DURING FORMAL ISSUE						REASON OF LATEST CHANGE
		FIRST ISSUE	SECOND ISSUE	THIRTH ISSUE	FOURTH ISSUE	FIFTH ISSUE	SIXTH ISSUE	
		REV.00	REV.01	REV.02	REV.03	REV.04	REV.05	
1		X	X					
2		X	X					
3		X	X					
4		X	X					
5		X	X					
6								
7								
8								
9								
10								
11								
12								
13								
14								
15								
16								
17								
18								
19								
20								
21								
22								
23								
24								
25								
26								
27								
28								
29								
30								
31								
32								
33								
34								
35								
36								
37								
38								
39								
40								

Our fluid is explosive so all vents and PSV's outlet should be collected and sent to the flare and also client It expects to give or take only one header from each fluid.
So you will receive one header of cooling water at the battery limit and we will only take one header delivered to the flare.
Provide the size of all the pipelines you need.
Please correct instrument and equipment tag number, I wrote some for example

Discharge capacity: 1100-1200 kg/h	Speed: 494 rpm	Operating press.: 2,8-3,5 bar(g)	Operating press.: 10,5 bar(g)
Exhaust pressure: 21 bar(g)	Power supply: 400 V / 50 Hz / 3 ph	Design press.: 5 bar(g)	Design press.: 16 bar(g)
Design temperature: 180°C	Ingress protection: IP 55	Hydrotest press.: 7,5 bar(g)	Hydrotest press.: 24 bar(g)
Speed: 494 rpm	Hazardous area class: Ex II 3G IIB T3, Ex'ec'		

This pressure (30barg) is much higher than the maximum required pressure (21barg). The downstream tanks and exchanger are designed for a maximum pressure of 25barg. Is it possible to reduce the set-point without affecting the proper operation of the compressor?



- GENERAL NOTES
1. All instrument and control tubing will be SS316L 1/4"
 2. PSV Isolation valves are interlocked to ensure that one PSV is always online.
 3. All equipments are tagged with package no. PK6801 for example E-1 is E-PK6801-1.
 4. All instruments are tagged with package no. PK6801 for example PDT-01 is PDT-PK6801-01.
 5. All valves in process line are wafer type.

REFERENCE DOCUMENT



LEGENDS & ABBREVIATION

DE	EXT	IFC	A
Eng. Phase	Purpose of Distribution (POD)	Purpose of Issue (POI)	Owner's Action
01	20-05-25	ISSUED FOR APPROVAL	SK SK JJ PW
00	28-03-25	ISSUED FOR APPROVAL	SK SK JJ PW
REV.	ISSUE DATE	DESCRIPTION	PREPARED BY CHECKED BY APPROVED BY AUTHORIZED BY

DE CONTRACTOR :	BE CONTRACTOR :	OWNER :
PETRO PALAYESH ENGINEERING CO.	TECHNICAL GROUP COMPANY AUTOMATION, INSTRUMENTATION & CONTROL	SERAI GOSTARAN REJAL

PROJECT : ABT 360 KT/Y PP PLANT Project				
TITLE :				

